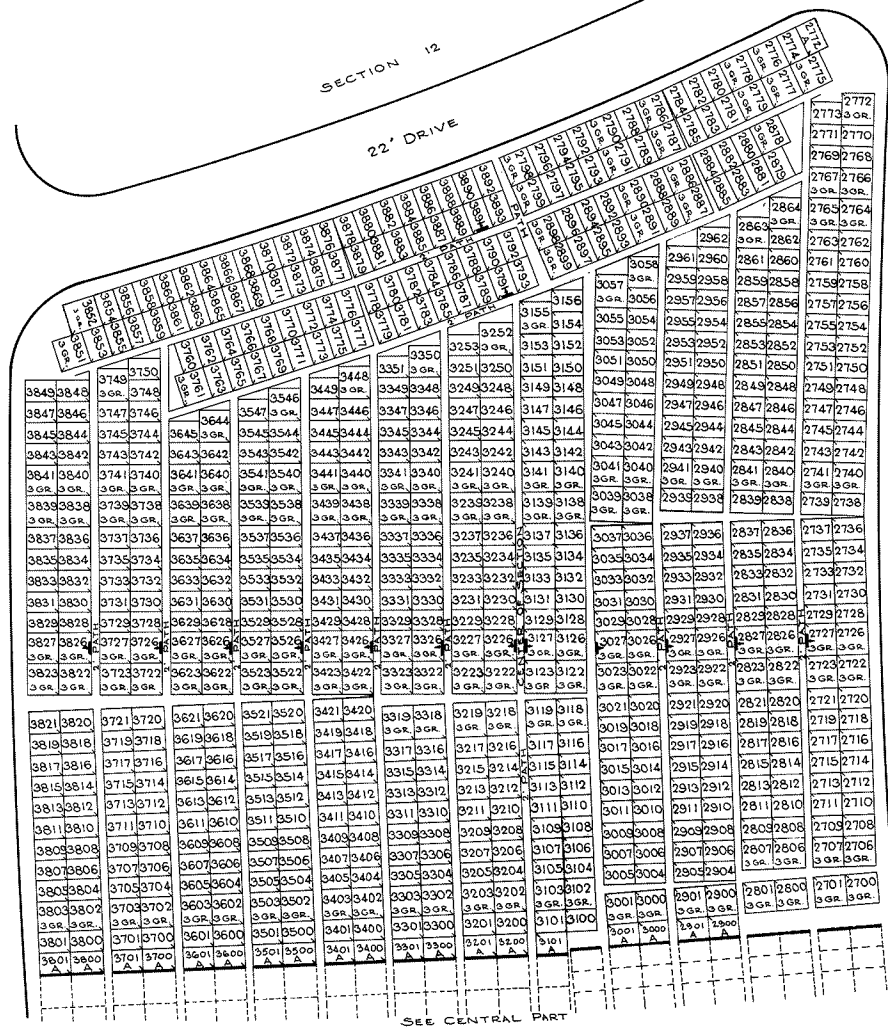


SECTION 14



NOTE:  
THE LOT NUMBER IS FOUND IN THE UPPER,  
RIGHT HAND CORNER OF LOTS AS YOU FACE  
THE SECTION AND IS INDICATED THUS [ ]

LOCATION OF GRAVE MARKERS SHOWN ↑  
ARROW INDICATES DIRECTION GRAVE  
MARKERS WILL FACE.

ALL LOTS ARE 2 GRAVE LOTS EXCEPT  
WHERE OTHERWISE NOTED.

ALL 2 GRAVE LOTS ARE 6'x9'  
ALL 3 GRAVE LOTS ARE 9'x9'

617 2 GRAVE LOTS  
150 3 GRAVE LOTS  
777 TOTAL LOTS

**HOLY CROSS CEMETERY**  
CLEVELAND, OHIO  
**NORTH PART**  
**SECTION 14**

SCALE 1" = 20' G. C. A. AUG. 1961

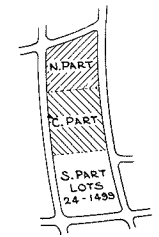
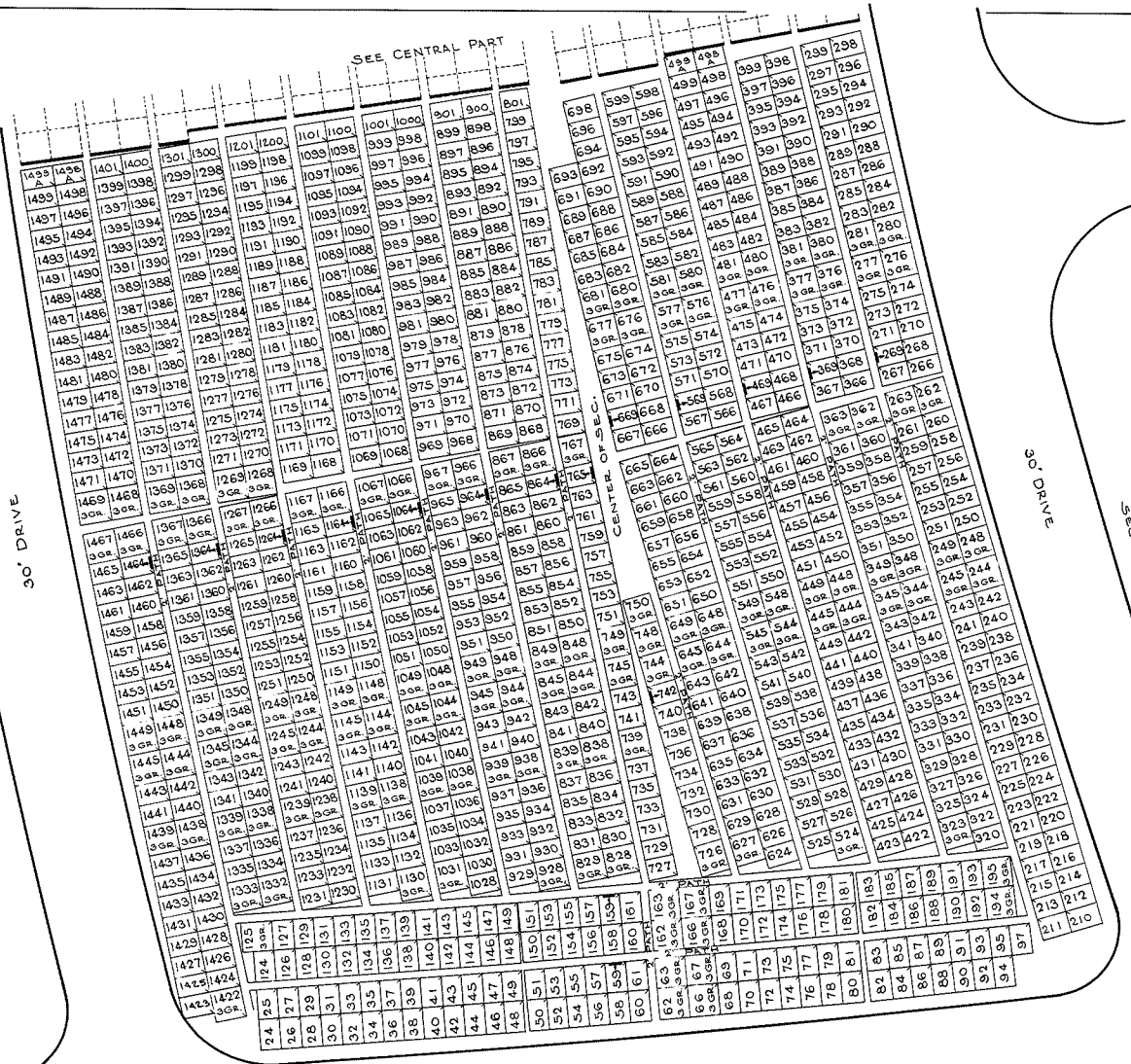
REV. 1-3-65



SEC. 15

90' DRIVE

SEE CENTRAL PART



SECTION 14

NOTE:  
 THE LOT NUMBER IS FOUND IN THE UPPER RIGHT HAND CORNER OF LOTS AS YOU FACE THE SECTION AND IS INDICATED THUS

LOCATION OF GRAVE MARKERS SHOWN ARROW INDICATES DIRECTION GRAVE MARKERS WILL FACE.

ALL LOTS ARE 2 GRAVE LOTS EXCEPT WHERE OTHERWISE NOTED.

ALL 2 GRAVE LOTS ARE 6'x9'  
 ALL 3 GRAVE LOTS ARE 9'x9'

944 2 GRAVE LOTS  
 120 3 GRAVE LOTS  
 1064 TOTAL LOTS

**HOLY CROSS CEMETERY**  
 CLEVELAND, OHIO  
**SOUTH PART**  
**SECTION 14**

SCALE 1"=20' G. C. A. AUG. 1961